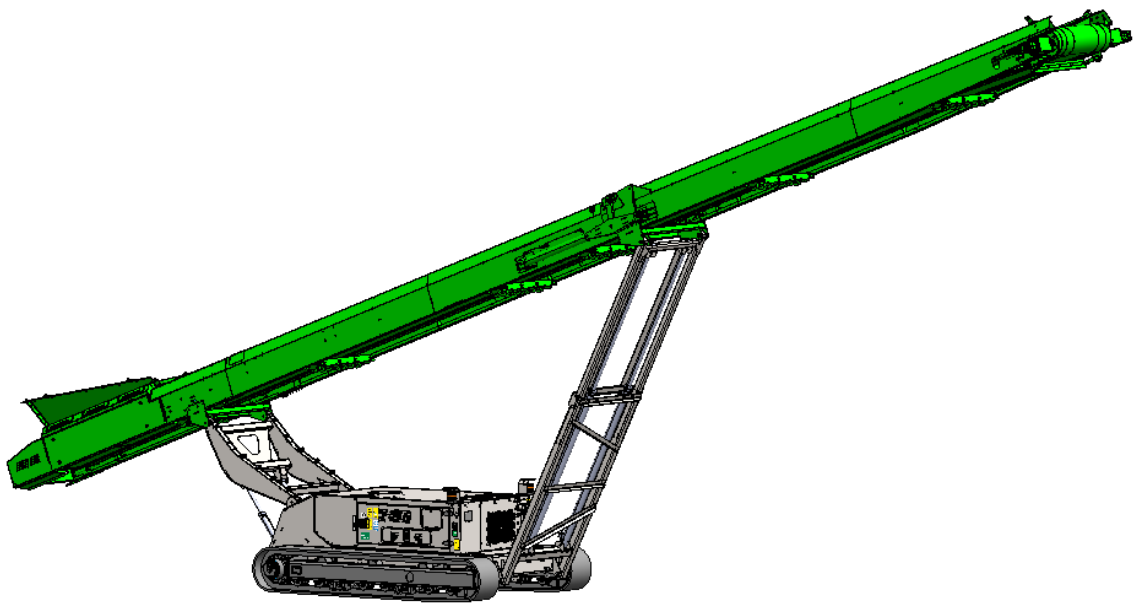


SPECIFICATIONS



4065T TRACK CONVEYOR

ALL SPECIFICATIONS ARE CURRENT TO THIS PRINTING, BUT ARE SUBJECT TO CHANGE



INNOVATION



QUALITY



SERVICE

DESCRIPTION

Terracon's latest addition to the materials handling division, the newly designed 4065T, is engineered to streamline material stockpiling and transfer directly from your material processing equipment. It provides an ideal solution for all your material handling requirements, offering the flexibility and mobility to ensure a fast, efficient stockpiling process. By eliminating the need for loaders and reducing double handling of materials, the 4065T enhances productivity and simplifies operations.

The unit is designed for containerized transport, requiring minimal setup time and significantly lowering transport costs.

The 4065T Track Conveyor comes with the following features as standard:

- Hydraulic folding heading section for transport minimizing setup time.
- Hydraulically adjustable discharge height up to 8.4 meters
- Hydraulically adjustable feed in height to compliment crushing and screening plants.
- CAT C2.2 Engine
- 3.5 Meter tracks for superior maneuverability and stability.
- Fuel efficient Hydraulics system.
- User Friendly Hydraulic Controls
- Feed boot hardox liners
- Heavy Duty Impact Bed

DIMENSIONS AND CAPACITIES

Length – working (Max)	60'-10" (18.55m)
Height – working (Max)	27'-4" (8.33m)
Length – transport	39'-9" (12.1m)
Width – transport	7'-8" (2.34m)
Height – transport	8'-3" (2.5m)
Over Hang - Transport	16'-7" (5.1m)
Max Product Size	8" minus (203.2MM)

MATERIALS

Materials include but are not limited to;

- Sand and Gravel
- Aggregates
- Compost
- Topsoil
- C and D waste
- Mulch
- Coal

ALL SPECIFICATIONS ARE CURRENT TO THIS PRINTING, BUT ARE SUBJECT TO CHANGE



INNOVATION



QUALITY



SERVICE

CONVEYOR

Belt width	40" (1000mm)
Belt spec	3 Ply (400/3 5+1.5)
Scraper	Urethane scraper as standard
Pulley Adjuster	Speed Bar
Conveyor Idlers	45 Degree angle
Return Idlers	Self-Cleaning Rubber Disc
Conveyor motor	Dual Drive Terracon TMV630
Drive Drum	350mm Ø with herringbone Lagging
Tail Drum	270mm Ø spoked drum
Max Belt Speed	165RPM (3 M/Sec)
Engine Speed	2100 RPM

CAPACITIES

Hydraulic tank	75 US gal (285 L)
Diesel tank	53 US gal (200 L)
Feed Boot Capacity	1.4 Yd ³ (1.1M ³)
Engine	55Kw (75Hp) Value Engine

OPTIONS INCLUDING BUT NOT LIMITED TO;

- Feed boot Rubber Liners.
- Head Scraper upgrade.
- Anti-Roll backs
- Rear Hydraulic Folding Jack legs
- Extended Feed boot with material shelf
- Heavy duty 4 ply belt

SAFETY

- External belt alignment points.
- External grease points.
- Engine safety shutdown systems.
- Full safety guarding for nip points.

ALL SPECIFICATIONS ARE CURRENT TO THIS PRINTING, BUT ARE SUBJECT TO CHANGE



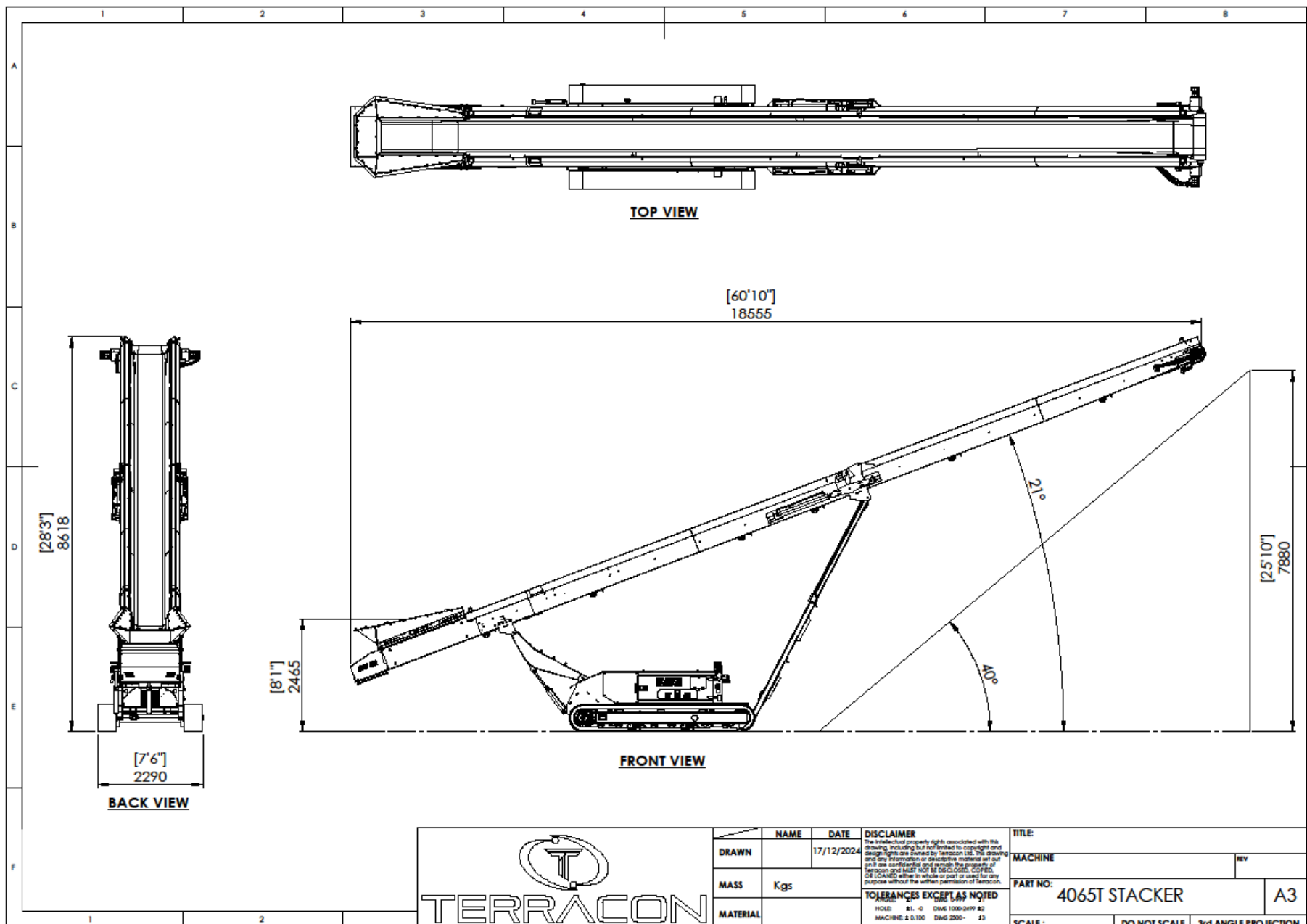
INNOVATION

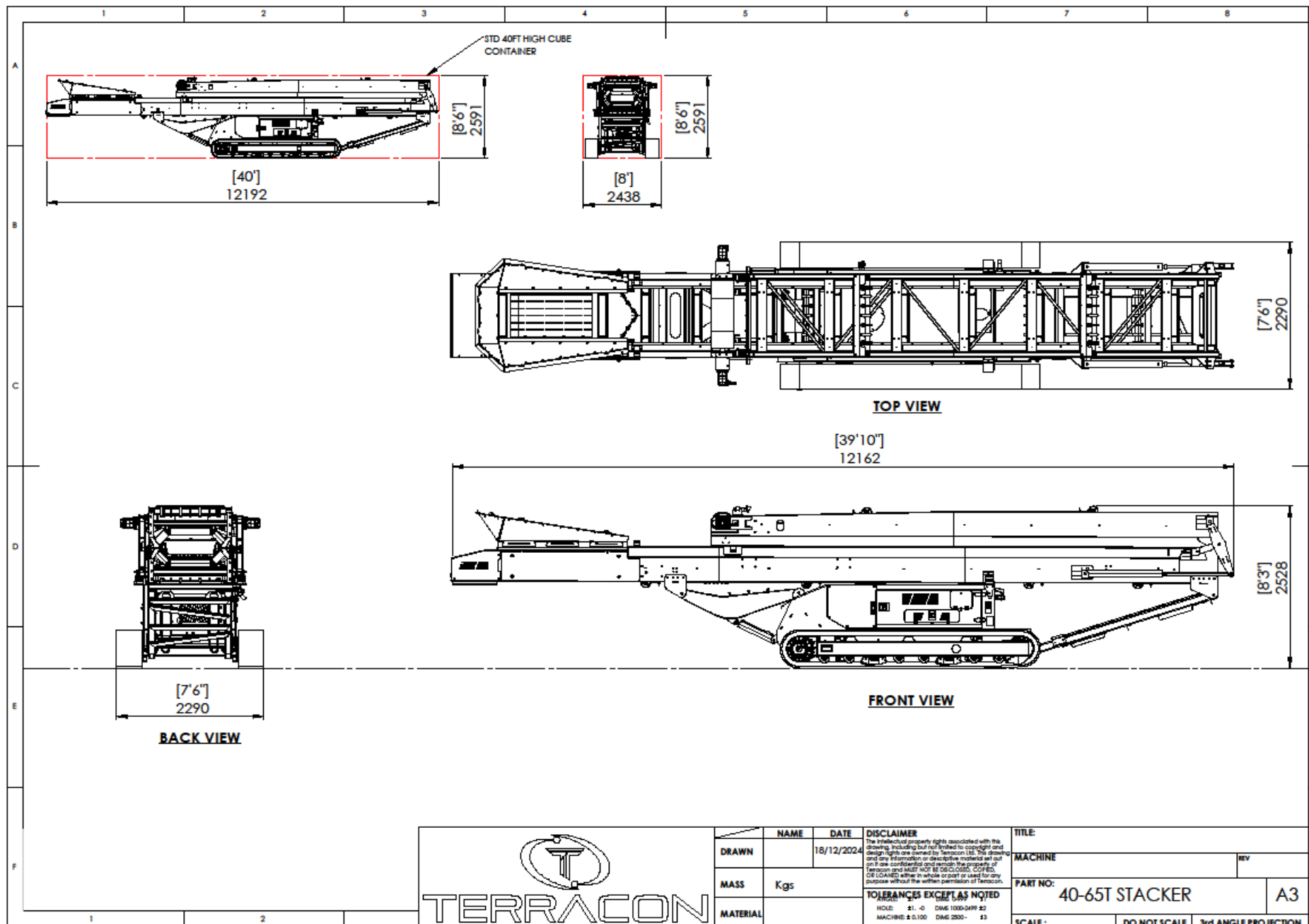


QUALITY



SERVICE

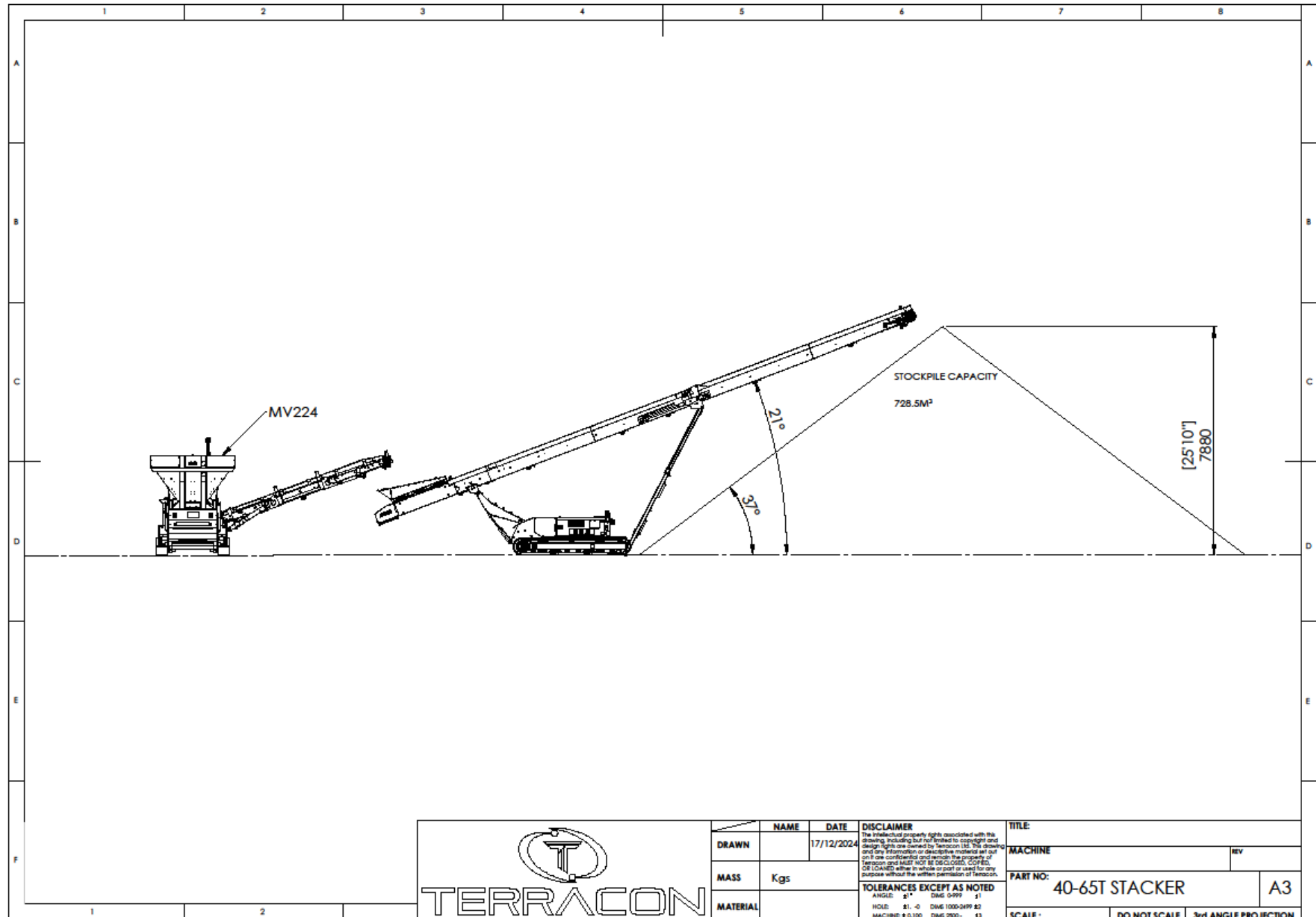






TERRACON

+44 28 8676 9444
Ronan Valley Business Park
58 Ballyronan Road - Magherafelt - BT456EW
info@terracon.co.uk - www.terracon.co.uk



NAME	DATE	DISCLAIMER	TITLE
DRAWN	17/12/2024	The intellectual property rights associated with this drawing, including but not limited to copyright and design rights are owned by Terracon Ltd. The drawing and any information or descriptive material set out on it are confidential and remain the property of Terracon and MUST NOT BE DISCLOSED, COPIED, OR LOANED either in whole or part or used for any purpose without the written permission of Terracon.	MACHINE
MASS	Kgs	TOLERANCES EXCEPT AS NOTED ANGLE: ±1° DIM 0-999 ±1 HOLE: ±1, -0 DIM 1000-999 ±2 MACHINE: ±0.100 DIM 200-±0.2	PART NO: 40-65T STACKER
MATERIAL			A3
SCALE:		DO NOT SCALE	3rd ANGLE PROJECTION