



Doppstadt



trommel screens



Doppstadt trommels are North America's #1 brand for good reason — they feature precision engineering, high-quality components and incredible efficiency. These benefits make any screening job easier while still lowering your cost of throughput and material production.



SM 720.2 SA



SM 617.2



SM 720.2K



SM 726.2 SA

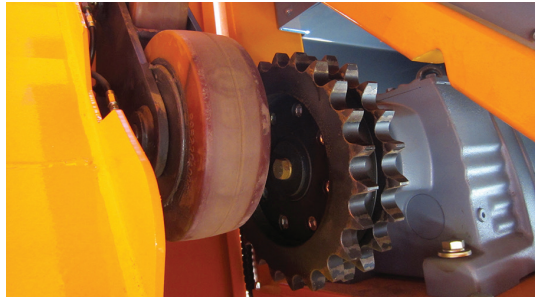
INNOVATIVE FEATURES ON DOPPSTADT TROMMEL SCREENS



Auto load sensing varies the material flow from the hopper to consistently maintain peak output.



The laser-cut, auger-style drum design provides best-in-class open screening area.



The trommel drum is driven by a double chain and sprocket that delivers exceptional torque.

ENGINEERED TO OUTPERFORM

The original is still the best.

Doppstadt trommels are designed to efficiently handle a wide range of applications, including compost, mulch, topsoil, aggregates, C&D, MSW, and more. With best-in-class fuel efficiency, ease of operation, and precision screening, nothing else in the industry compares.

The most efficient and effective performance available.

All SM Series trommels are equipped with automatic load-sensing for maximum screening efficiency, a hydraulically tensioned cleaning brush, and a quick-change screening drum design for flexible sizing changes. These features allow you to keep your operation moving with minimal interruption or downtime.

Regularly scheduled maintenance is made easy with the swing-out engine, central lubrication points, and multiple access doors. Need to change screen sizes? Simply lift the drum off the urethane wheels, drop in a new one and resume screening in 15 minutes. It's a trommel designed to respect your time.

To further assist your operations, Doppstadt trommels offer additional components such as tipping/vibrating grids, a remote control, magnetic head pulleys, star screen inserts, mulch coloring systems, hopper extensions, and more.

Maximize efficiency. Reduce production costs.

Regardless of your application, the SM Series trommels from Doppstadt can be run at peak performance by a single operator. Maximize your efficiency and reduce your overall production costs with Doppstadt.



An optional 9.6 yd³ hopper offers a low feed height and is driven by twin gear drives.



The entire engine unit swings out 90° from the machine for convenient maintenance access.

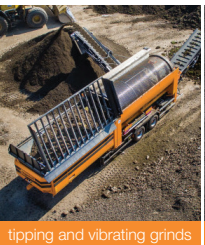


True modular construction allows easy access for operators and technicians.

DOPPSTADT TROMMEL MODELS AND SPECS

		SM 617.2	SM 720.2	SM 720.2 SA	SM 726.2 SA	SM 720.2 K
DRIVE						
TYPE		Duetz TCD 2.9 L4	Duetz TCD 3.6 L4	Duetz TCD 3.6 L4	Duetz TCD 3.6 L4	Duetz TCD 3.6 L4
POWER		75hp / 55kW	114hp / 85kW	114hp / 85kW	114hp / 85kW	114hp / 85kW
FUEL TANK		80g diesel	80g diesel	106g diesel	106g diesel	106g diesel
EMISSIONS		Tier V final	Tier V final	Tier V final	Tier V final	Tier V final
CHASSIS						
TYPE		central axle	central axle	fifth wheel, 2 axles	fifth wheel, 2 axles	steel tracks
FEED HOPPER		6.5 yd ³	6.5 yd ³	9.5 yd ³	9.5 yd ³	9.5 yd ³
LOADING HEIGHT		9' 6"	9' 6"	9' 6"	9' 6"	9' 6"
DRUM						
LENGTH		17'	20'	20'	26'	20'
DIAMETER		6'	7'	7'	7'	7'
SPEED		0-21 rpm	0-21 rpm	0-21 rpm	0-21 rpm	0-21 rpm
CONVEYORS						
SIDE LENGTH		18'	17' 3"	18'	18'	17' 3"
SIDE WIDTH		32"	40"	40"	40"	40"
REAR LENGTH		18'	18'	18'	18'	18'
REAR WIDTH		32"	40"	40"	40"	40"
TRANSPORT DIMENSIONS						
LENGTH		36' 1"	38' 9"	38' 5"	43' 5"	42'
WIDTH		8' 4"	8' 4"	8' 2"	8' 4"	9' 8"
HEIGHT		13' 1"	13' 1"	13' 2"	13' 2"	11' 2"
TOTAL WEIGHT		37,479lbs	42,000lbs	48,000lbs	52,911lbs	57,500lbs

AVAILABLE OPTIONS



tipping and vibrating grinds



multi-channel remote control



magnetic head pulleys



star screen insert



windsifter attachment



mulch coloring system



hopper extensions



bag rippers



ECOVERSE.NET

440-937-3225

ECO-111 6/23 500