



# BACKHUS



windrow turners



**BACKHUS** turners do more than just turn compost, they homogenize and aerate windrows of any material type to build a pile structure that promotes hydration. This turning action creates the ideal environment for microbial growth through moisture distribution, which in turn reduces composting time and operating costs.



A75



A60-A65



A50-A55



A30-A38

**INNOVATIVE FEATURES ON BACKHUS TURNERS**



Large diameter drum maximizes homogenization and oxygenation of the windrow material.



A fold-out work platform gives technicians clear access to the machine's components.



Independently controlled track clearers guide material to the drum and "float" to fit any pad.

# TOMORROW'S TURNER TODAY

## Get big performance from an efficient footprint.

The self-propelled BACKHUS A30 and A38 turners are field-proven in hundreds of operations around the world, due to their compact, low-maintenance engineering. These entry-level turners are cost-effective replacements for loaders and standard pull-behind turners.

The A30 and A38 are versatile, simple to operate and efficient, creating windrows without gaps (toe-to-toe) to maximize your space. Ease of transport and low maintenance requirements make these turners the perfect solution for operations with multiple small yards.

## Leverage innovative technology to solve modern composting challenges.

BACKHUS continues to set the global standard with their A50 to A65 windrow turner models, offering windrow widths from 18' to more than 20' and turning capacity of 5,000 to 7,200 yards per hour.

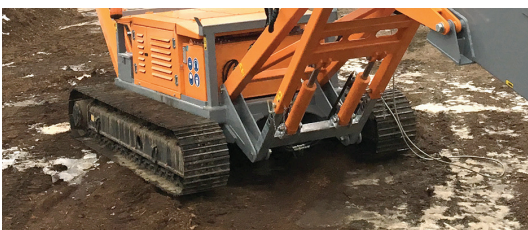
Standard features include a high-torque drum, Cummins/Volvo power plant, hydraulic tailgate, large track clears, reversing cooling fan, self-diagnostic CAN bus control system and a 360 degree elevating cabin. Performance is further extended with available options that include a windrow irrigation system, windrow cover winder, concentrate injector, side-transfer conveyor and a Bluetooth-controlled hose reel.

## The largest production compost turners in the world deliver maximum throughput.

The BACKHUS A75 is the largest turner in the world, delivering capacities exceeding 8,000 yards per hour, robust construction, extreme durability, intuitive operation, a Tier V power plant and unparalleled fuel efficiency.

Engineered with smart technology and an innovative design, A75 turners almost run themselves. A touchscreen graphic interface with real-time feedback allows the operator to monitor all aspects of the machine, while the load control system automatically adjusts to ensure maximum throughput, efficiency and the highest possible product consistency.

Regardless of the feedstock, the A75 sets new standards in power, performance, efficiency and handling.



Self-diagnostic CAN bus system provides real-time feedback and alarms displayed in text format.



The single-joystick control, load-sensing and touchscreen display make for easy operation.



The industry's largest cabin provides the operator with a 360° view of the site.

# BACKHUS MODELS AND SPECS

	A30	A38	A50	A55	A60	A65	A75
<b>WINDROWS</b>							
WIDTH	up to 10'	up to 12' 5"	up to 16' 5"	up to 18'	up to 20'	up to 21' 4"	up to 24' 6"
HEIGHT	up to 4'	up to 6' 2"	up to 7' 11"	up to 8'	up to 9'	up to 9' 10"	up to 11'
CAPACITY	900 yd <sup>3</sup> /hr	2,000 yd <sup>3</sup> /hr	5,200 yd <sup>3</sup> /hr	5,900 yd <sup>3</sup> /hr	6,500 yd <sup>3</sup> /hr	6,500 yd <sup>3</sup> /hr	8,900 yd <sup>3</sup> /hr
<b>DRUM</b>							
DIAMETER	29"	39.5"	47"	47"	55"	55"	71"
NOTES	reversible under load	reversible under load	reversible under load	reversible under load	reversible under load	reversible under load	reversible under load
<b>DRIVE</b>							
TYPE	Yanmar	Cummins F3.8	Cummins B6.7	Cummins L9	Cummins X12	Cummins X12	Cummins X15
POWER	54hp	156hp	280hp	340hp	400hp	400hp	600hp
EMISSIONS	EPA Tier 4 final	Tier V <sup>2</sup>	Tier V <sup>2</sup>	Tier V <sup>2</sup>	Tier V <sup>2</sup>	Tier V <sup>2</sup>	Tier V <sup>2</sup>
FUEL TANK	13g diesel	79g diesel	132g diesel	132g diesel	198g diesel	198g diesel	198g diesel
<b>TRANSPORT DIMENSIONS</b>							
WEIGHT	4,100lbs	14,100lbs	31,000lbs	38,000lbs	45,000lbs	53,000lbs	68,000lbs
DEPTH	4' 7"	7' 5"	8' 5"	8' 5"	9' 8"	9' 8"	11'
WIDTH	13' 8"	18' 5"	26' 3"	27' 11"	28' 6"	33' 6"	34' 9"
HEIGHT	6' 3"	8' 6"	10' 3" <sup>1</sup>	10' 3" <sup>1</sup>	11' 2" <sup>1</sup>	11' 10" <sup>1</sup>	12' 5" <sup>1</sup>
<b>WORKING DIMENSIONS</b>							
DEPTH	8' 6"	13' 11"	14' 6"	16' 3"	19' 8"	17' 8"	20' 8"
WIDTH	11' 5"	13' 11'	18' 8"	20' 4"	22'	22' 8"	26' 10"
HEIGHT	6' 3"	14' 3"	15' 4" <sup>1</sup>	15' 6" <sup>1</sup>	16' 7" <sup>1</sup>	16' 11" <sup>1</sup>	18' 4" <sup>1</sup>

<sup>1</sup> fixed cabin model

<sup>2</sup> Volvo engine option also available

## AVAILABLE OPTIONS



elevating cabin



irrigation connection



remote heated mirrors



landfill undercarriage



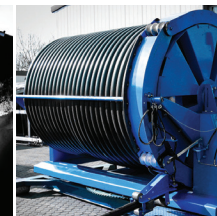
fleece winder



wheeled undercarriage



side conveyor



irrigation hose reel



ECOVERSE.NET

440-937-3225